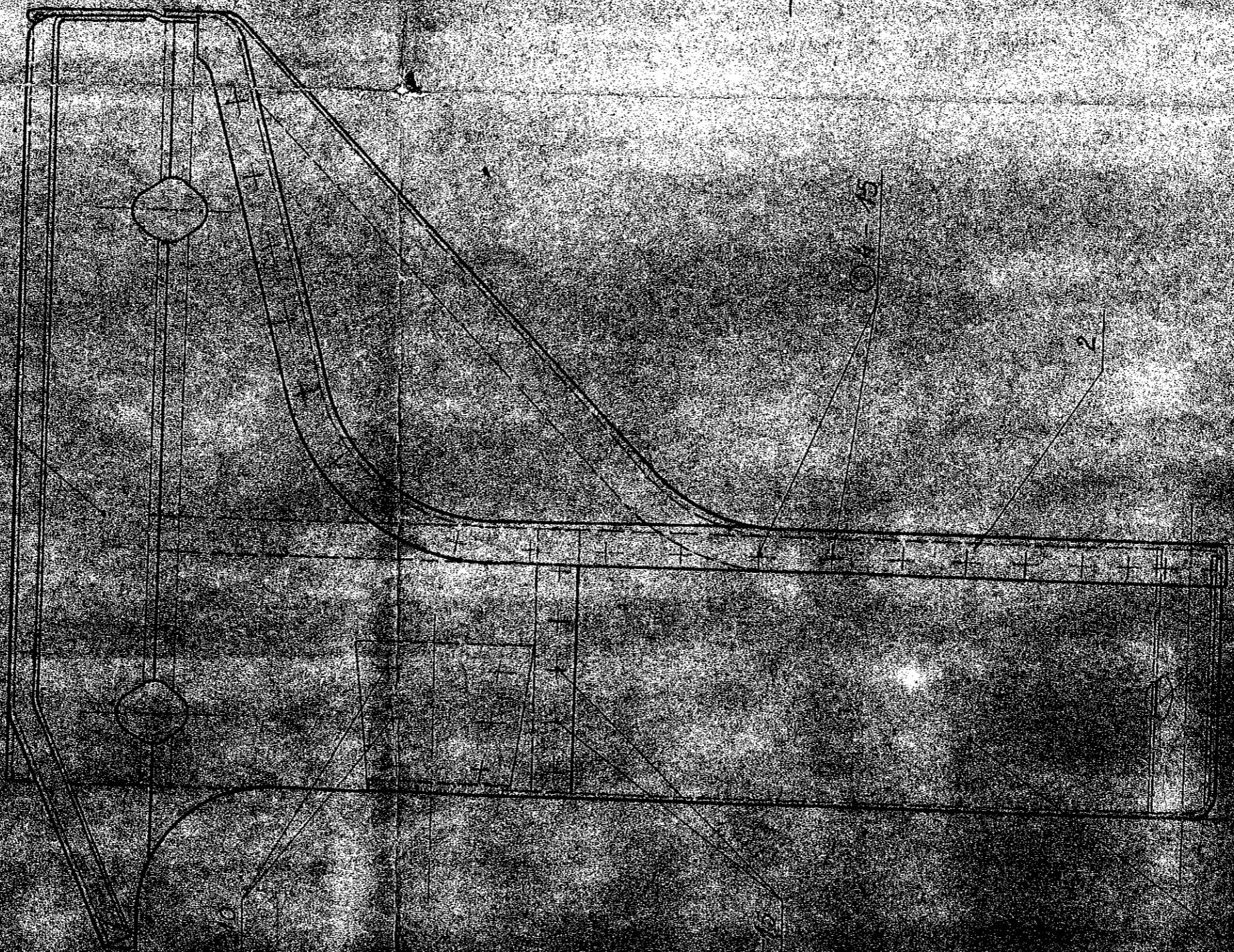


7 na detalu MR2-456A warunki me
pokazano przetoczeń

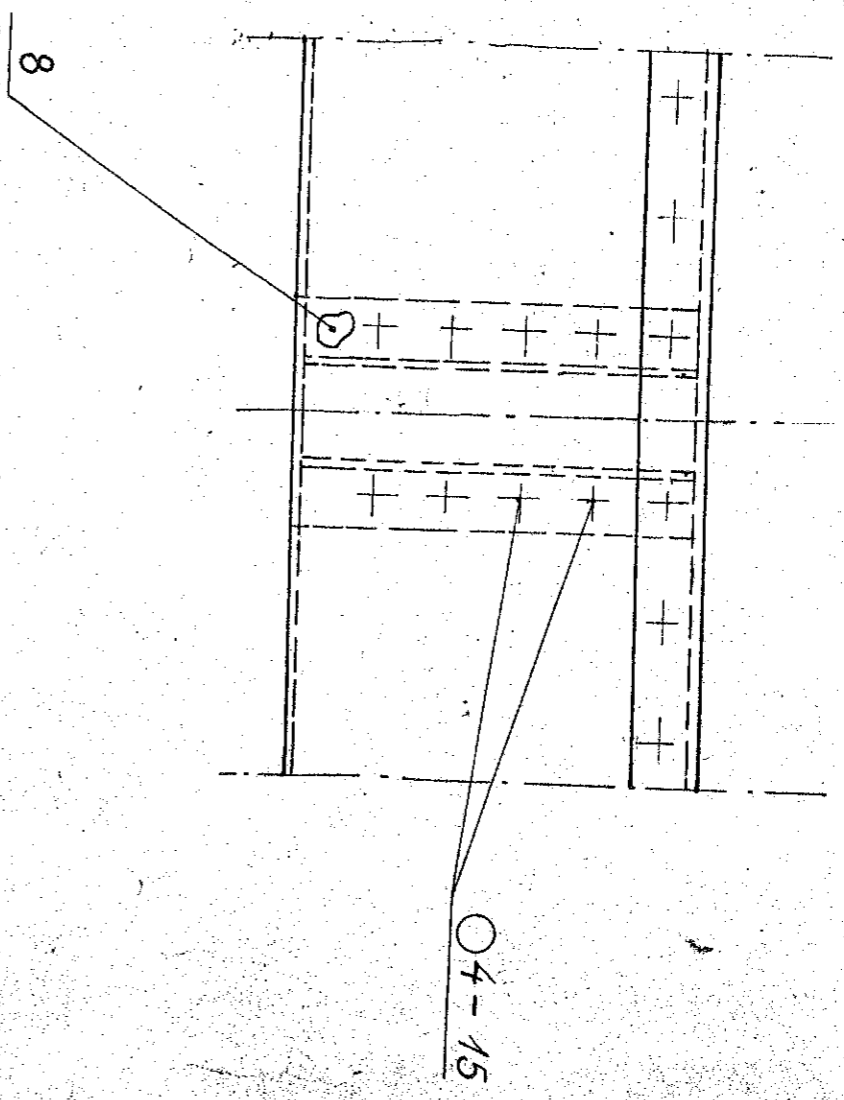
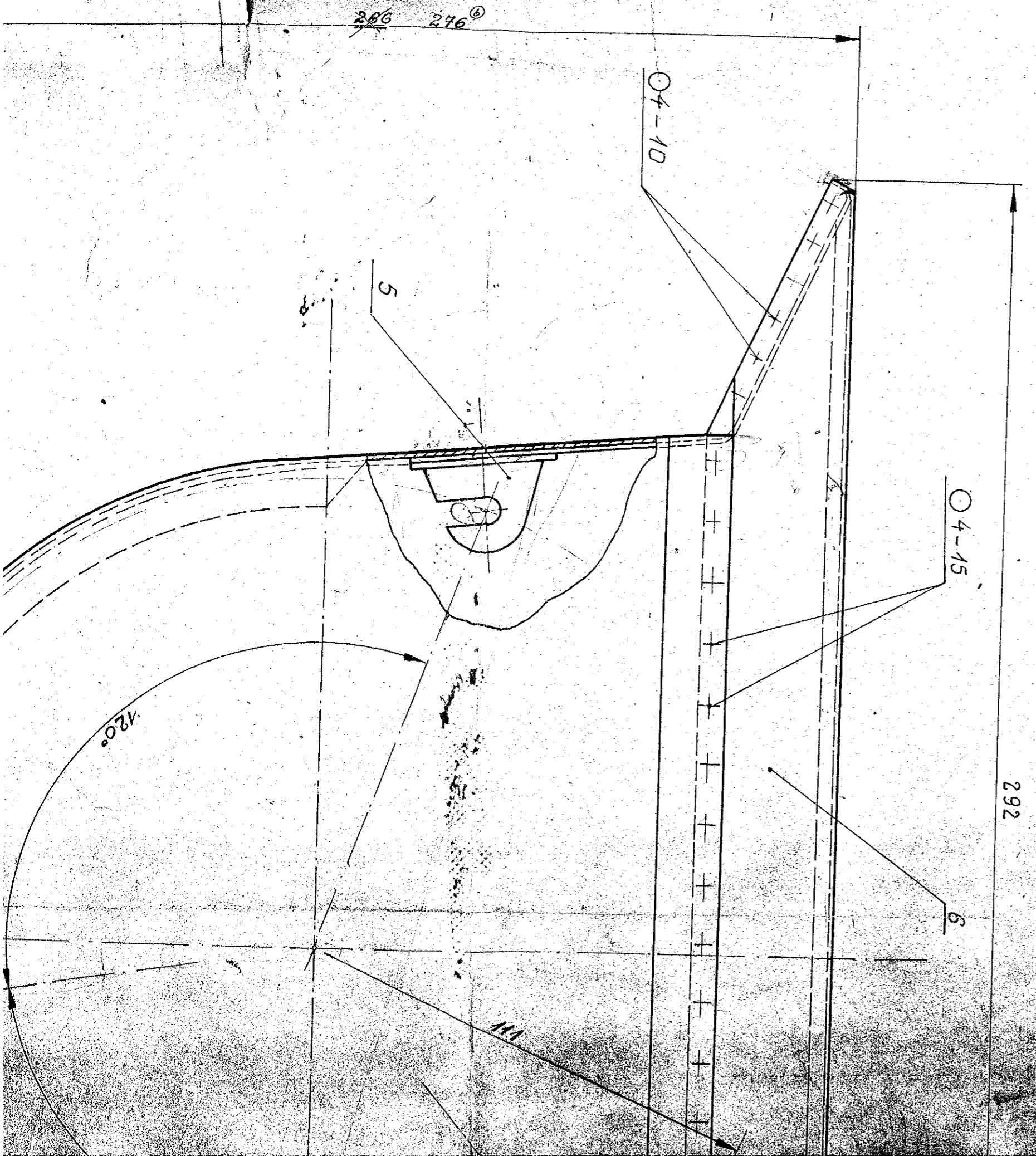


Uwaga.

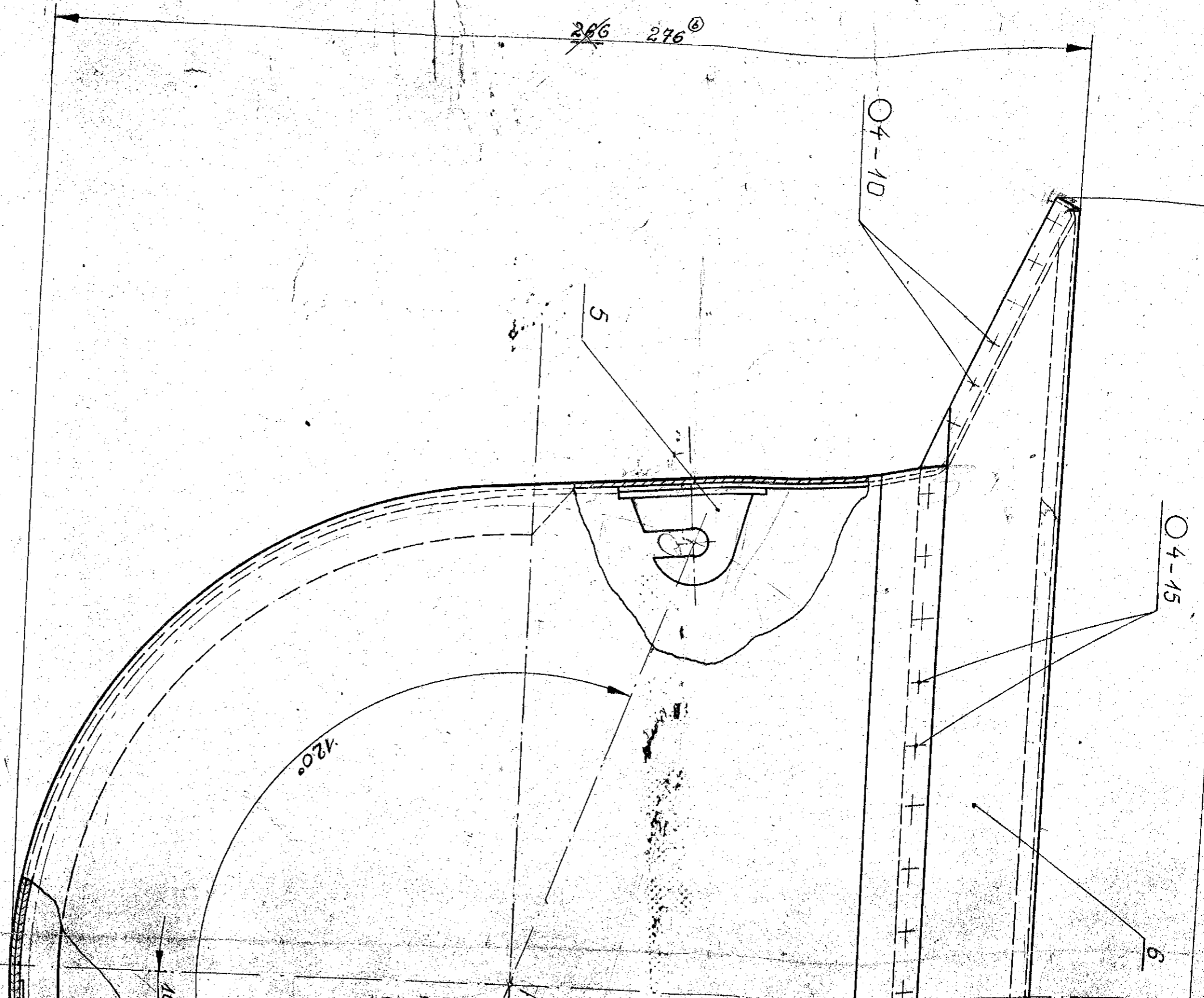
Całość pokryć
piecowym z P1

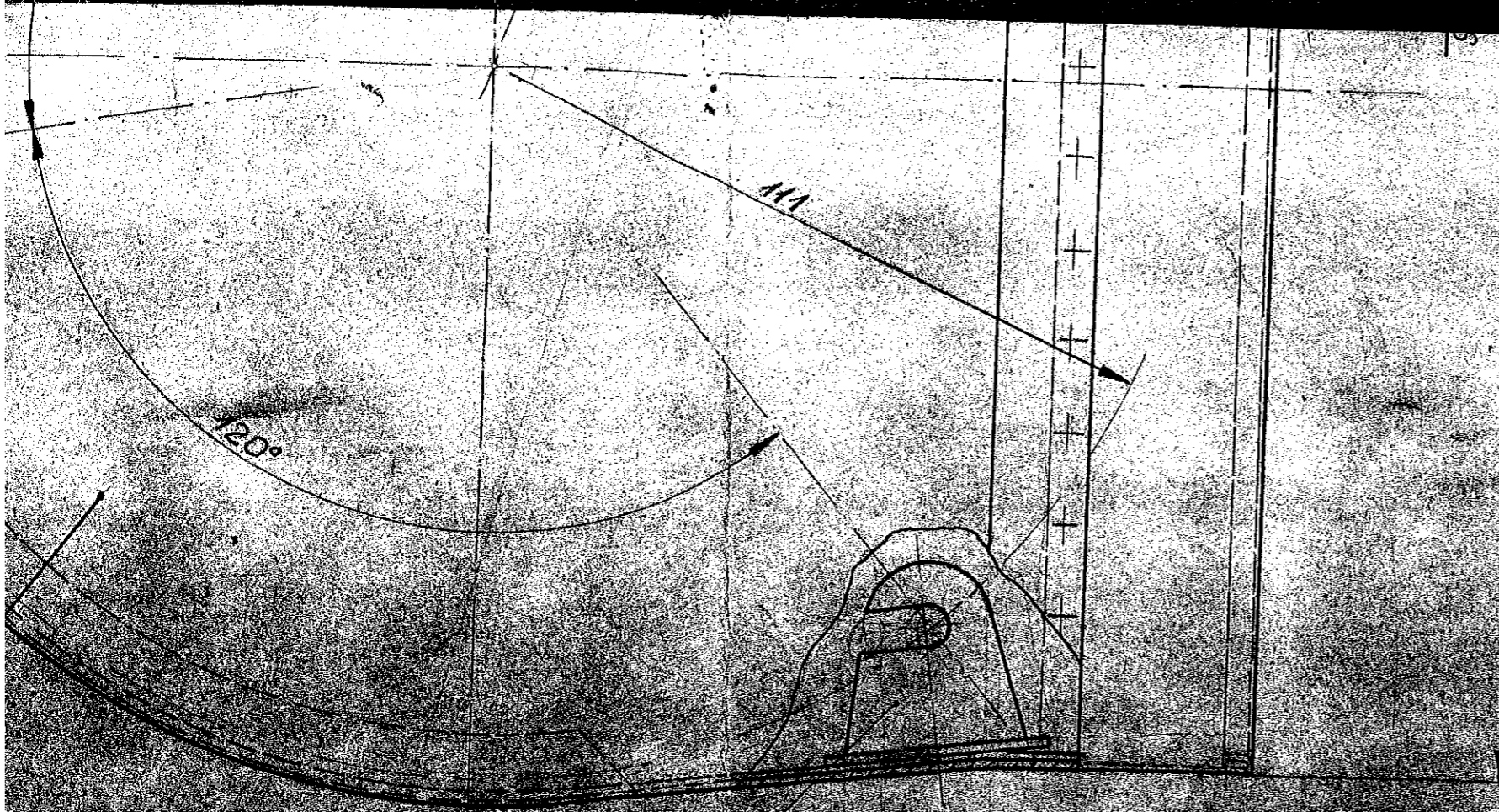
04-15

8	MR2-457	ukośka usztywniająca
7	MR2-456A	boczna ścianka gęsta
6	MR2-456A	usztywnienie
5	MR2-454A/2	ucho
4	MR2-451A/1	ucho
3	MR2-453A	obrotowanie
2	MR2-452A	ścianka
1	MR2-451A	ścianka boczna
LP	Nr 195	NORMA CZĘŚCI

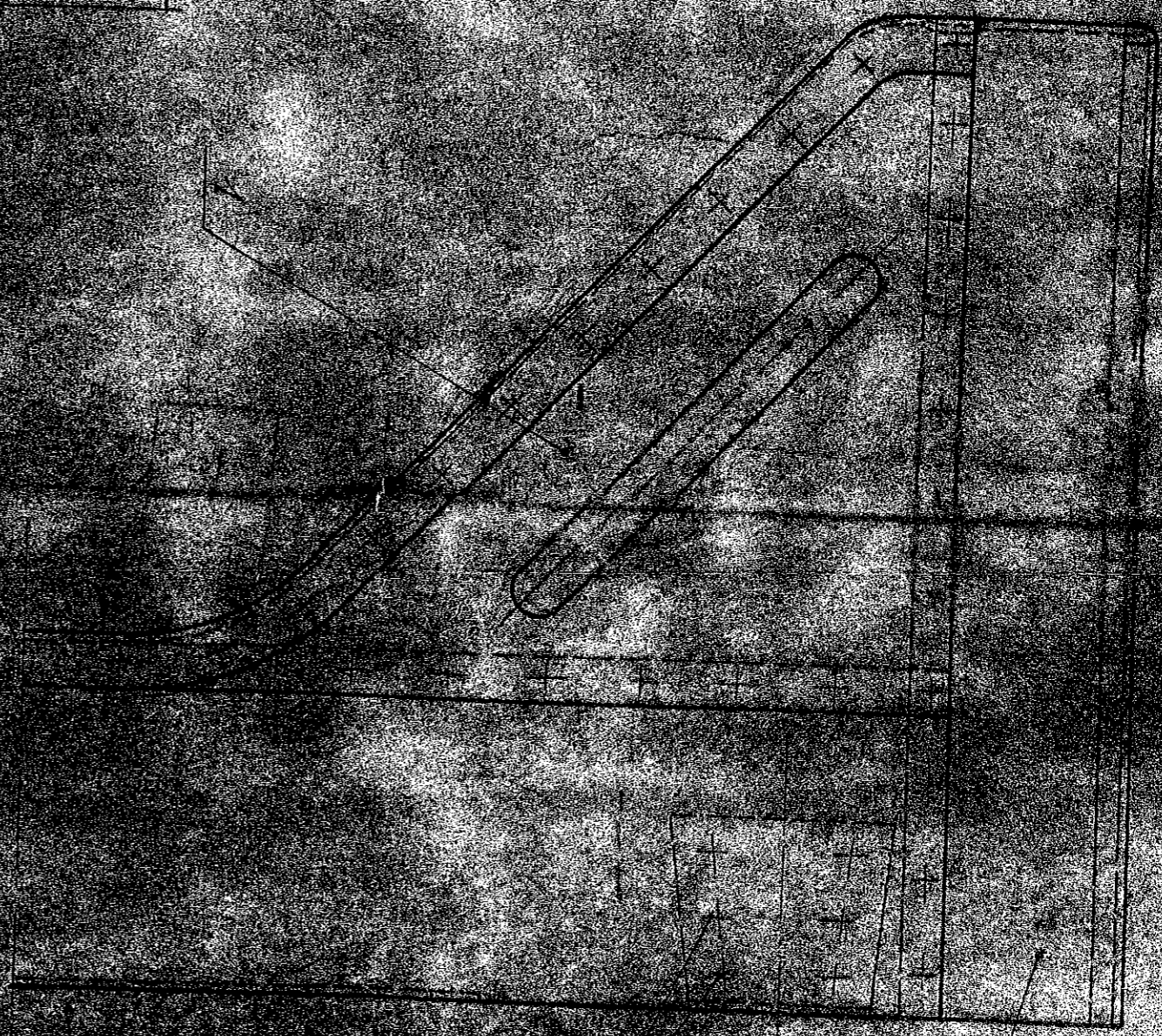


Widok "B"

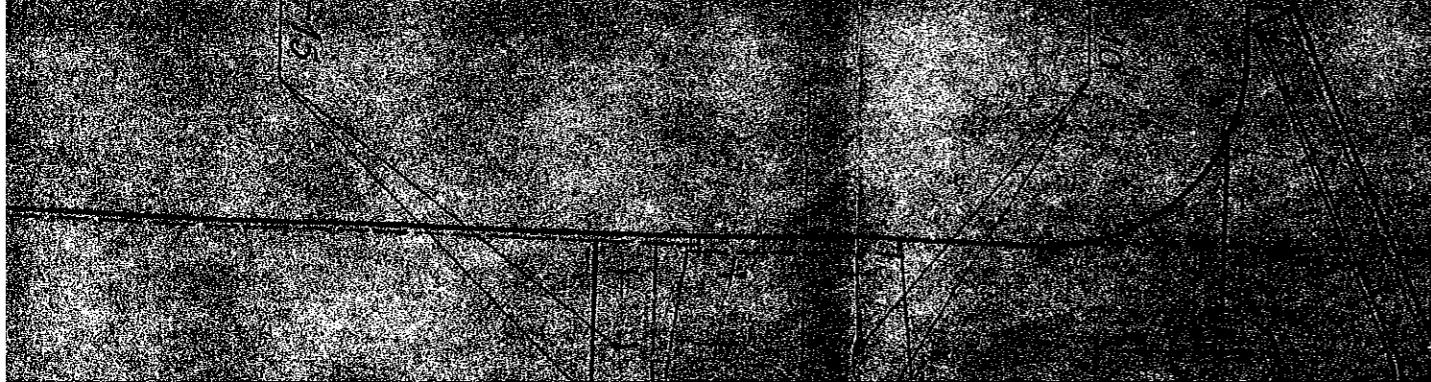


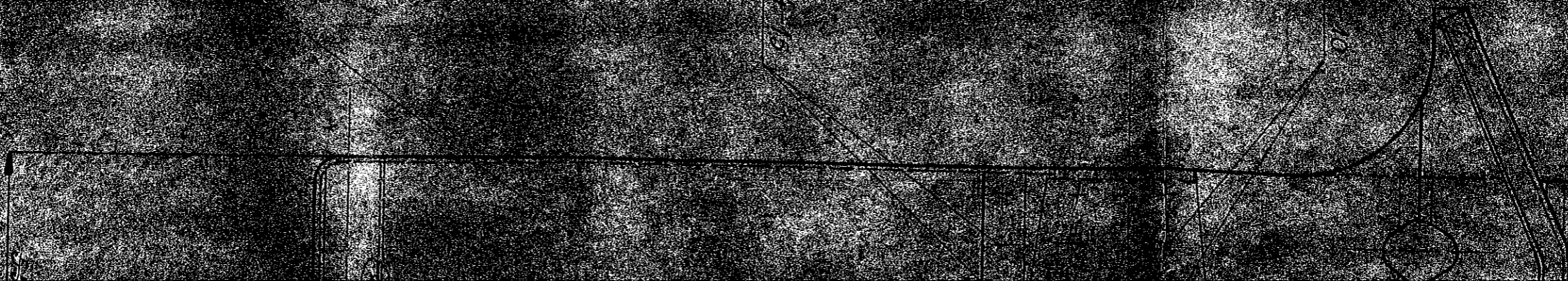
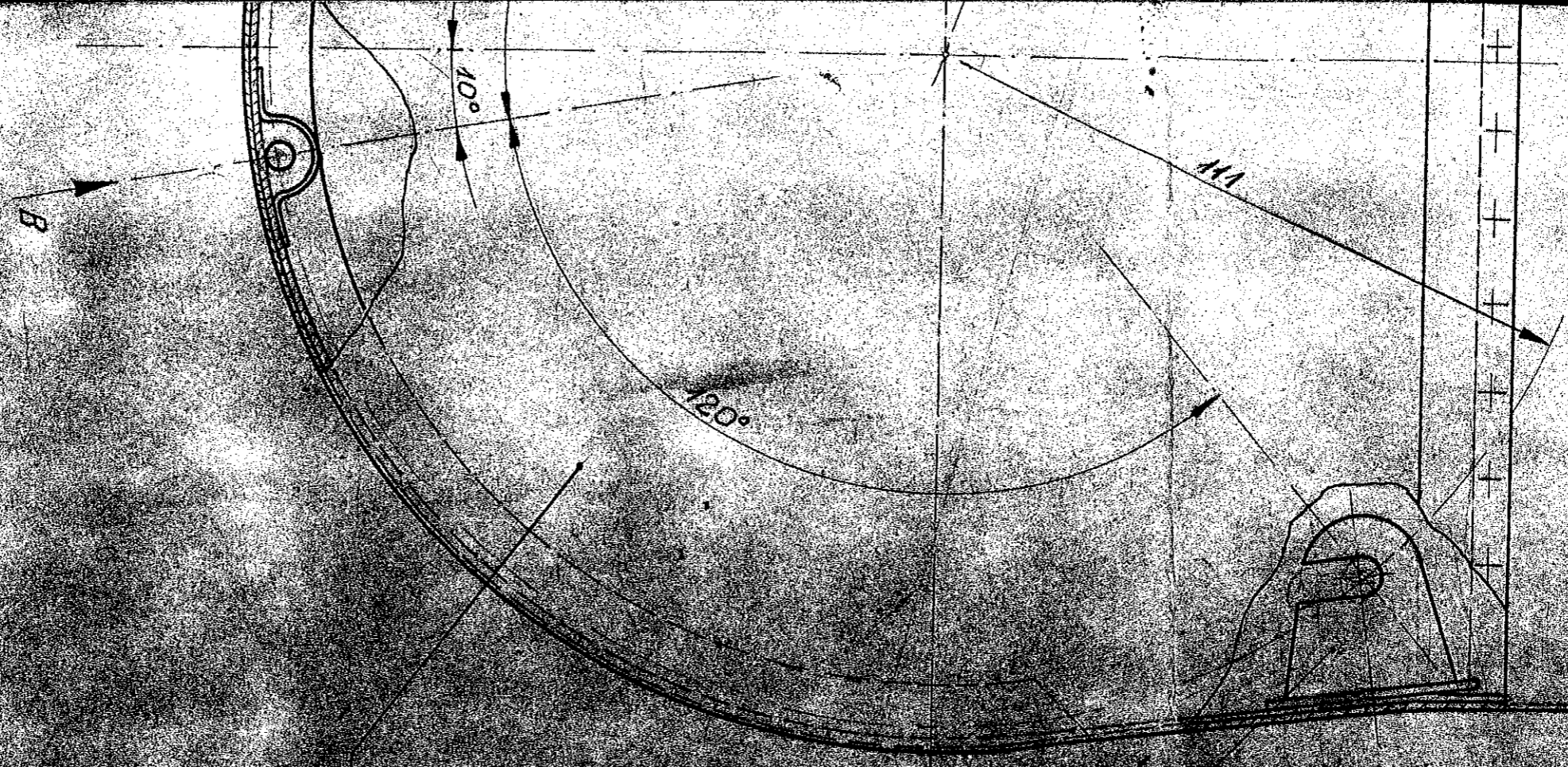


Block A



Detail





Block A

